

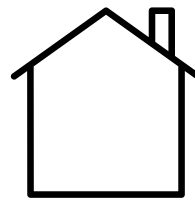
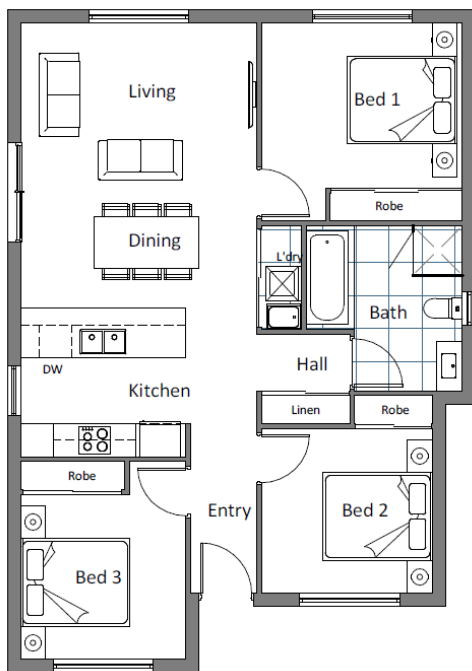
# CUNIC homes



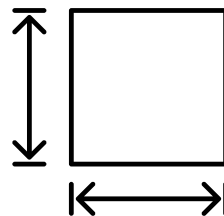
**TURN KEY - TENANT READY  
INVESTOR HOUSE & LAND PACKAGE**

**\$553,000**

**Lot 3 Carmody Court, New Norfolk**



**DWELLING  
SIZE:  
Approx  
94.57m<sup>2</sup>**



**BLOCK  
SIZE:  
Approx  
763m<sup>2</sup>**



**Sally Charleston**

 (03) 6231 8181

 209 Elizabeth Street, Hobart

 [www.cunichomes.com.au](http://www.cunichomes.com.au)

Pricing based on "M" class soil and maximum fall of 1500mm over the block. Pricing includes allowance for driveway, service connections and all documentation and council approvals. Image depicts style only. Turn key items included.