

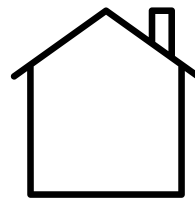
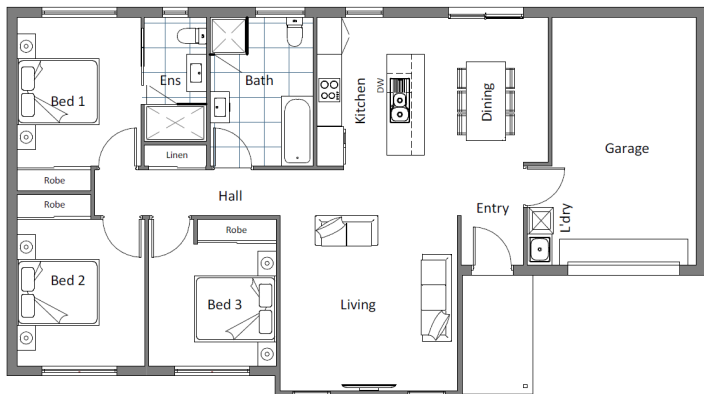
CUNIC homes



**TURN KEY - TENANT READY
INVESTOR HOUSE & LAND PACKAGE**

\$647,000

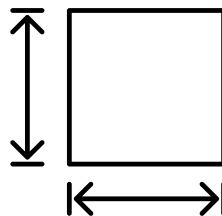
Lot 2 Carmody Court, New Norfolk



**DWELLING
SIZE:
Approx
138.92m²**



3



**BLOCK
SIZE:
Approx
879m²**




2



1



Sally Charleston

 (03) 6231 8181

 209 Elizabeth Street, Hobart

 www.cunichomes.com.au

Pricing based on "M" class soil and maximum fall of 1500mm over the block. Pricing includes allowance for driveway, service connections and all documentation and council approvals. Image depicts style only. Turn key items included.