

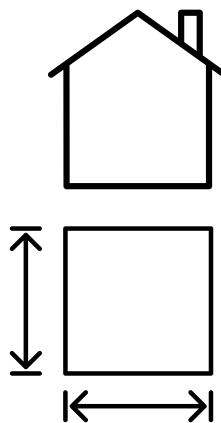
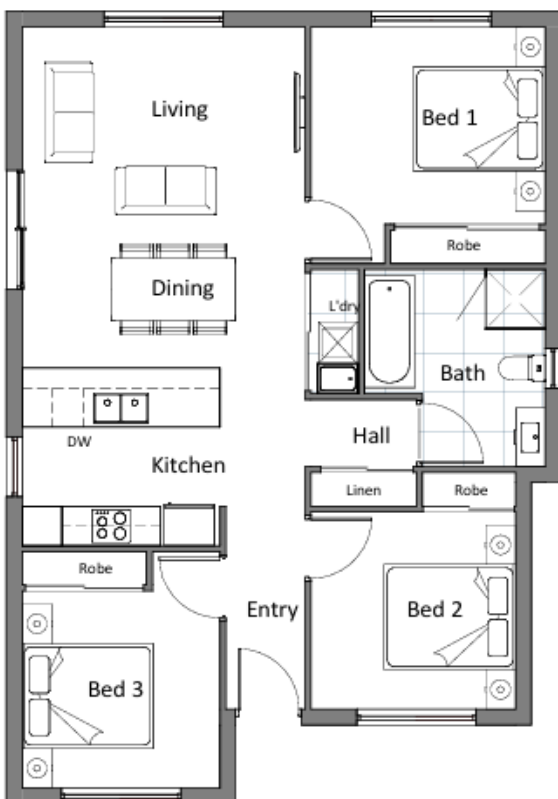
CUNIC homes



**TURN KEY - TENANT READY
INVESTOR HOUSE & LAND PACKAGE**

\$617,300

5 Silvergum Street, Brighton



**DWELLING
SIZE:
Approx
94.57m²**

**BLOCK
SIZE:
Approx
527m²**



Sally Charleston

(03) 6231 8181

209 Elizabeth Street, Hobart

www.cunichomes.com.au

Pricing based on "M" class soil, BAL-LOW and maximum fall of 2000mm over the block. Pricing includes allowance for driveway, service connections and all documentation and council approvals. Image depicts style only. Turn key items included.