

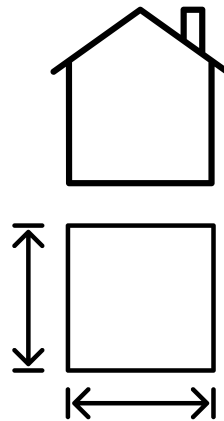
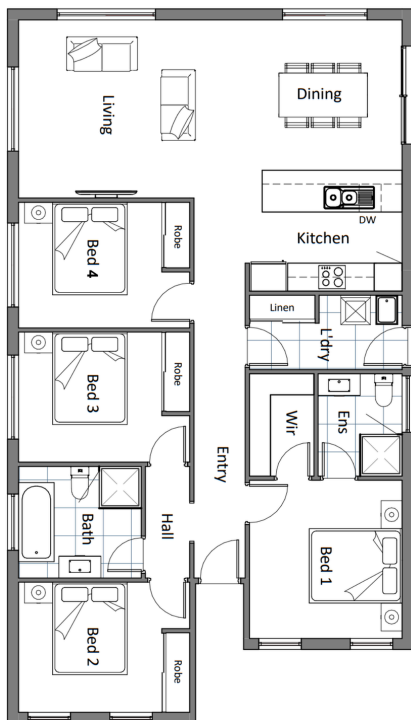
CUNIC homes



**TURN KEY - TENANT READY
INVESTOR HOUSE & LAND PACKAGE**

\$695,840

1 Silvergum Street, Brighton



**DWELLING
SIZE:
Approx
124.76m²**



**BLOCK
SIZE:
Approx
516m²**



Sally Charleston

- (03) 6231 8181
- 209 Elizabeth Street, Hobart
- www.cunichomes.com.au

Pricing based on "M" class soil, BAL-LOW and maximum fall of 1200mm over the block. Pricing includes allowance for driveway, service connections and all documentation and council approvals. Image depicts style only. Turn key items included.