

# CUNIC homes

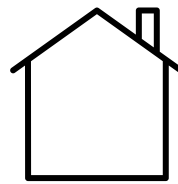
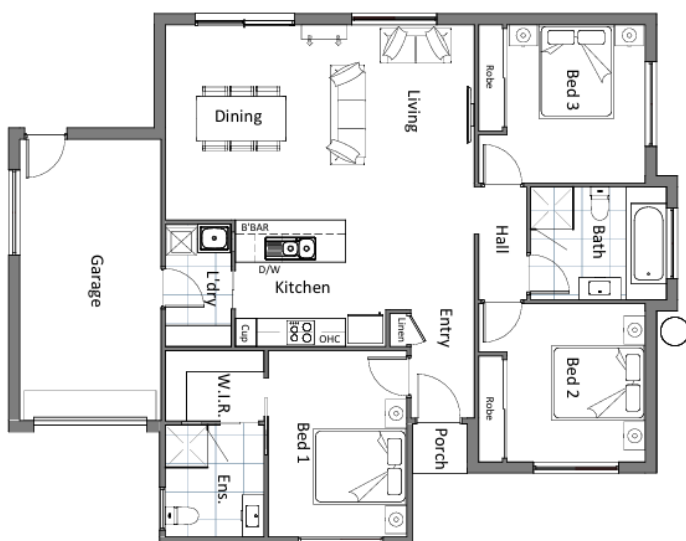


**HOUSE & LAND PACKAGE**

PRICED FROM  
**\$695,000**

**Lot 66 Kings Grove Estate, Huonville**

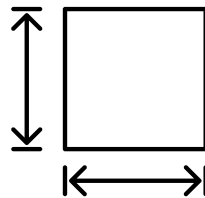
MYHOME PACKAGE  
AVAILABLE



**DWELLING  
SIZE:  
Approx  
132.57m<sup>2</sup>**



**3**



**BLOCK  
SIZE:  
Approx  
541m<sup>2</sup>**



**2**



**1**



**Sally Charleston**

(03) 6231 8181

209 Elizabeth Street, Hobart

[www.cunichomes.com.au](http://www.cunichomes.com.au)

Pricing based on "M" class soil assumed, BAL- LOW assumed and maximum fall of 500mm over the block. Pricing includes allowance for driveway, service connections and all documentation and council approvals. Image depicts style only.