

CUNIC homes

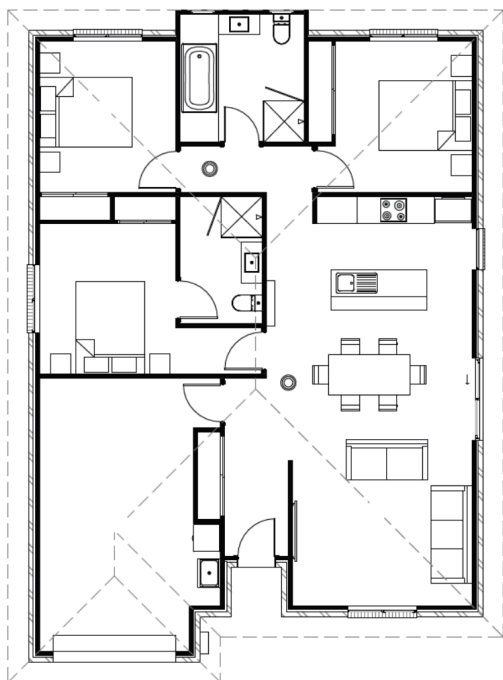


**TURN KEY - TENANT READY
INVESTOR HOUSE & LAND PACKAGE**

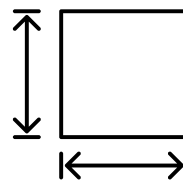
\$690,000

4 Bottlebrush Way, Risdon Vale

MYHOME PACKAGE
AVAILABLE



**DWELLING
SIZE:
Approx
132.69m²**



**BLOCK
SIZE:
Approx
650m²**



Sally Charleston

☎ 0415 107 420

📍 209 Elizabeth Street, Hobart

🌐 www.cunichomes.com.au

Pricing based on "M" class soil, BAL-12.5 and maximum fall of 1500mm over the block. Pricing includes allowance for driveway, service connections and all documentation and council approvals. Image depicts style only. Turn key items included.