

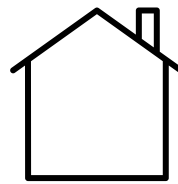
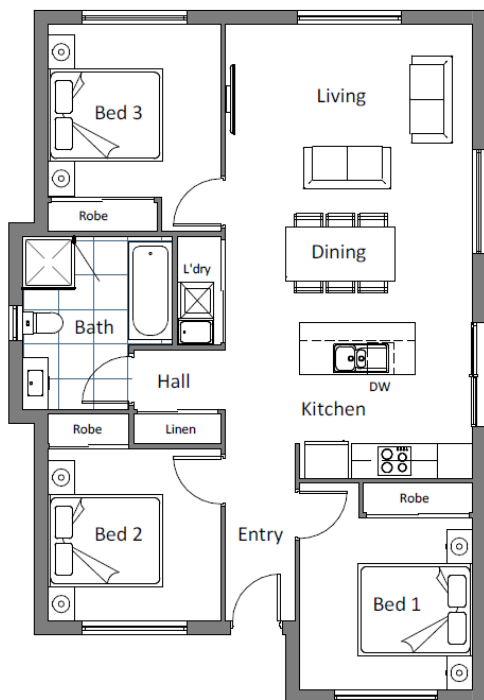
CUNIC homes



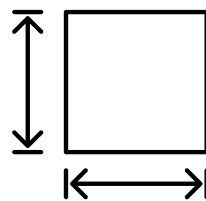
**TURN KEY - TENANT READY
INVESTOR HOUSE & LAND PACKAGE**

PRICED FROM
\$514,960

1 Horton Hill Rise, Gagebrook



**DWELLING
SIZE:
Approx
94.57m²**



**BLOCK
SIZE:
Approx
563m²**



Sally Charleston

 (03) 6231 8181

 209 Elizabeth Street, Hobart

 www.cunichomes.com.au

Pricing based on "M" class soil assumed, BAL- LOW assumed and maximum fall of 500mm over the block. Pricing includes allowance for driveway, service connections and all documentation and council approvals. Image depicts style only. Turn key items included.