

# CUNIC homes

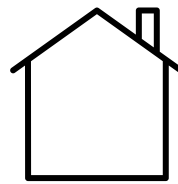
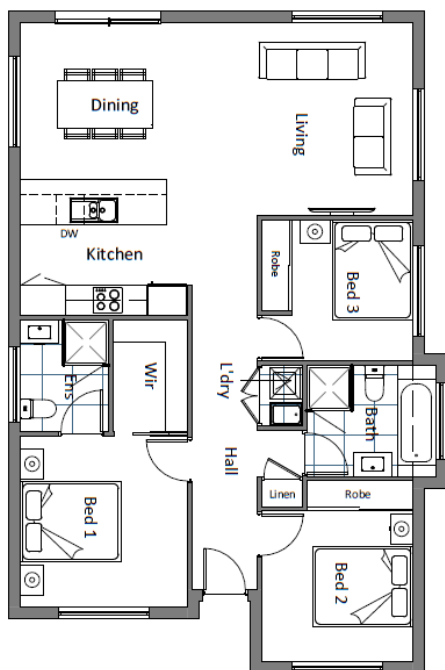


**HOUSE & LAND PACKAGE**

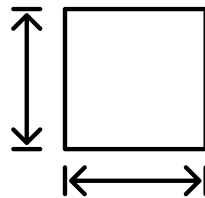
PRICED FROM  
**\$526,238**

**7 Plymouth Road, Gagebrook**

MYHOME PACKAGE  
AVAILABLE



**DWELLING  
SIZE:  
Approx  
104.45m<sup>2</sup>**



**BLOCK  
SIZE:  
Approx  
655m<sup>2</sup>**



**Sally Charleston**

(03) 6231 8181

209 Elizabeth Street, Hobart

[www.cunichomes.com.au](http://www.cunichomes.com.au)

Pricing based on "M" class soil assumed, BAL- LOW assumed and maximum fall of 500mm over the block. Pricing includes allowance for driveway, service connections and all documentation and council approvals. Image depicts style only.