

# CUNIC homes

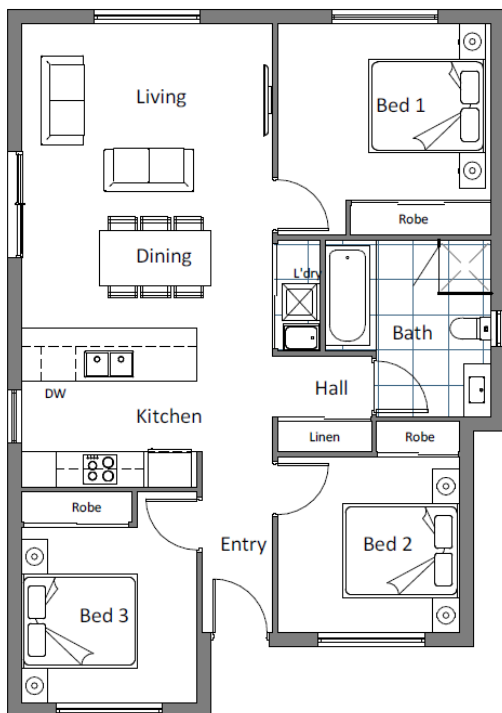


**TURN KEY - TENANT READY  
INVESTOR HOUSE & LAND PACKAGE**

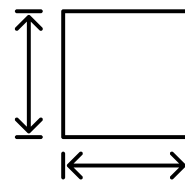
**\$622,000**

**7 Bottlebrush Way, Risdon Vale**

MYHOME PACKAGE  
AVAILABLE



**DWELLING  
SIZE:  
Approx  
94.57m<sup>2</sup>**



**BLOCK  
SIZE:  
Approx  
533m<sup>2</sup>**



**Sally Charleston**

☎ 0415 107 420

📍 209 Elizabeth Street, Hobart

🌐 [www.cunichomes.com.au](http://www.cunichomes.com.au)

Pricing based on "M" class soil, BAL-LOW and maximum fall of 4000mm over the block. Pricing includes allowance for driveway, service connections and all documentation and council approvals. Image depicts style only. Turn key items included.