

CUNIC homes

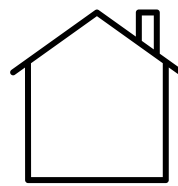
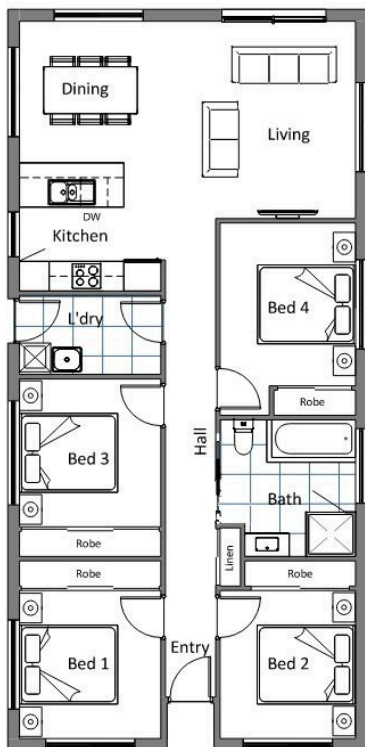


**TURN KEY - TENANT READY
INVESTOR HOUSE & LAND PACKAGE**

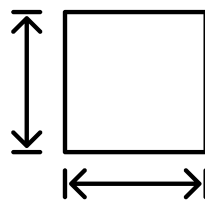
PRICED FROM
\$548,957

3 Plymouth Road, Gagebrook

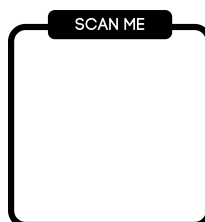
TURN KEY PACKAGE
PRICING



**DWELLING
SIZE:
Approx
108.74m²**



**BLOCK
SIZE:
Approx
672m²**



Sally Charleston

(03) 6231 8181

209 Elizabeth Street, Hobart

www.cunichomes.com.au

Pricing based on "M" class soil assumed, BAL- LOW assumed and maximum fall of 500mm over the block. Pricing includes allowance for driveway, service connections and all documentation and council approvals. Image depicts style only.