

CUNIC homes

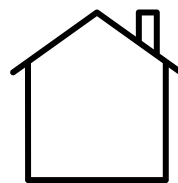
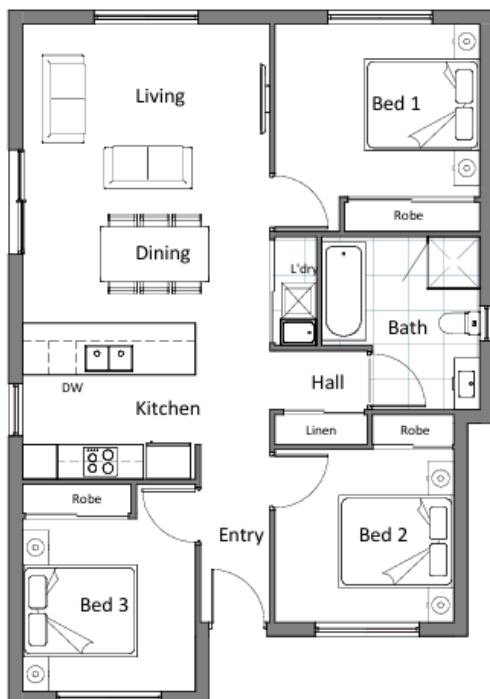


**TURN KEY - TENANT READY
INVESTOR HOUSE & LAND PACKAGE**

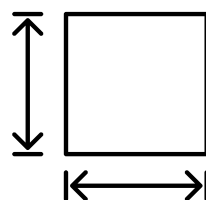
PRICED FROM
\$512,960

15 Plymouth Road, Gagebrook

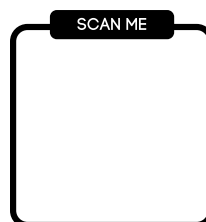
TURN KEY PACKAGE
PRICING



**DWELLING
SIZE:
Approx
94.57m²**



**BLOCK
SIZE:
Approx
657m²**



Sally Charleston

(03) 6231 8181

209 Elizabeth Street, Hobart

www.cunichomes.com.au

Pricing based on "M" class soil assumed, BAL-LOW assumed and maximum fall of 500mm over the block. Pricing includes allowance for driveway, service connections and all documentation and council approvals. Image depicts style only. Turn key items included.