

# CUNIC homes

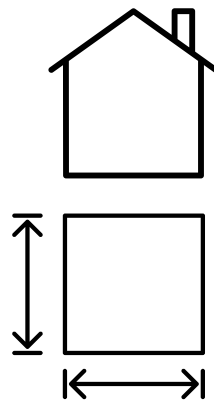
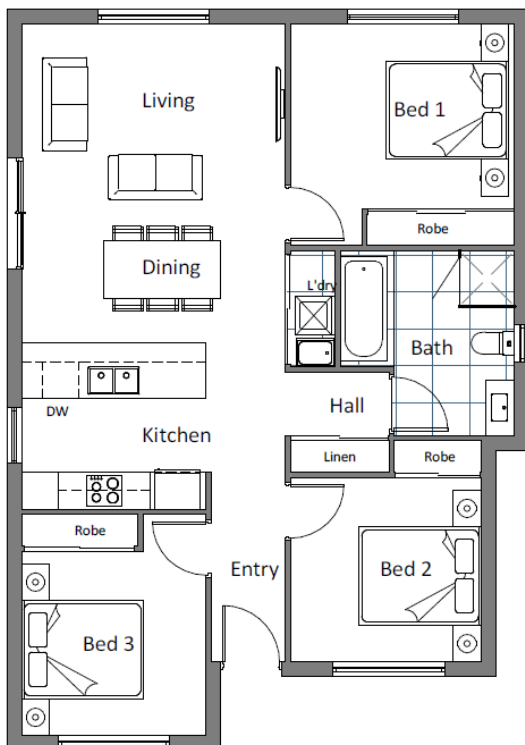


**TURN KEY - TENANT READY  
INVESTOR HOUSE & LAND PACKAGE**

PRICED FROM  
**\$616,075**

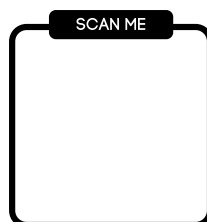
**11 Pamela Place, Brighton**

TURN KEY PACKAGE  
PRICING



**DWELLING  
SIZE:  
Approx  
94.57m<sup>2</sup>**

**BLOCK  
SIZE:  
Approx  
460m<sup>2</sup>**



**Sally Charleston**

(03) 6231 8181

209 Elizabeth Street, Hobart

[www.cunichomes.com.au](http://www.cunichomes.com.au)

Pricing based on "M" class soil, BAL-LOW and maximum fall of 500mm over the block. Pricing includes allowance for driveway, service connections and all documentation and council approvals. Image depicts style only. Turn key items included.