

# HUNTINGFIELD LAND RELEASE CUNIC HOUSE & LAND PACKAGE



**HOUSE & LAND PACKAGE**

**\$745,000**

**5 Nobelwood Rise, Huntingfield**



**3**



**1**

**LAND SIZE:**

**Approx  
421m<sup>2</sup>**


**DWELLING SIZE:**

**Approx  
111.70m<sup>2</sup>**

**CUNIC**  
**homes**

*Built for you.*

**Sally Charleston**  
Cunic Homes

(03) 6231 8181 

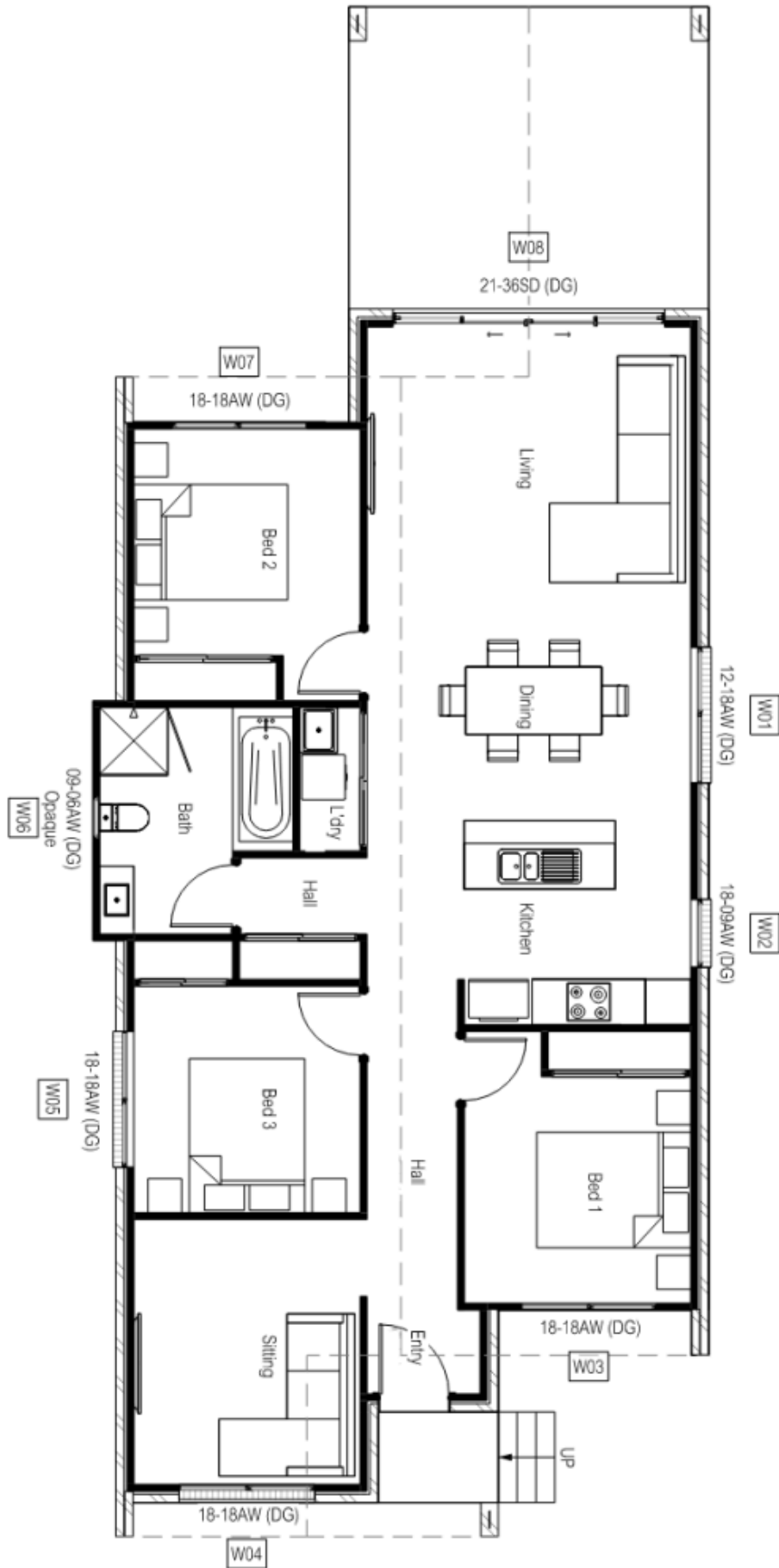
209 Elizabeth Street, Hobart 

[www.cunichomes.com.au](http://www.cunichomes.com.au) 



Pricing based on "M" class soil, subdivision contours only and BAL-Low. Pricing includes allowance for driveway, service connections and all documentation and council approvals. Image depicts style only.

# FLOOR PLAN



Customizable floor plan



## About the house

Situated within the highly anticipated Huntingfield Estate in Huntingfield, this House and Land package by Cunic Homes is perfect for families and investors.

This modern single-story house and land package by Cunic Homes features 3-bedrooms, 1-bathroom, generous open plan living with additional family room and ample parking for two cars.

This well designed home showcases top brands from Australia and Tasmania, with selections and specifications detailed by Cunic Homes' interior designer.

Upgraded smooth range brick and facade and large covered alfresco area all included in the price.  
Turn-key/MyHome package upgrade available.

*"modern fixtures and finishes  
you'll fall in love with"*

## About the area

Surrounded by schools, day care facilities, shopping centers and an easy 15 minute commute to the CBD, the new Huntingfield Estate is the perfect place for your new home.

