

# CUNIC homes

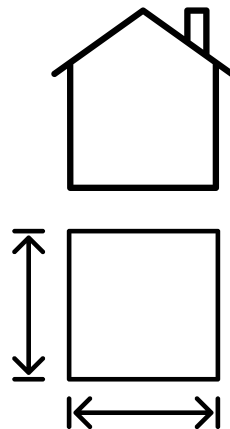
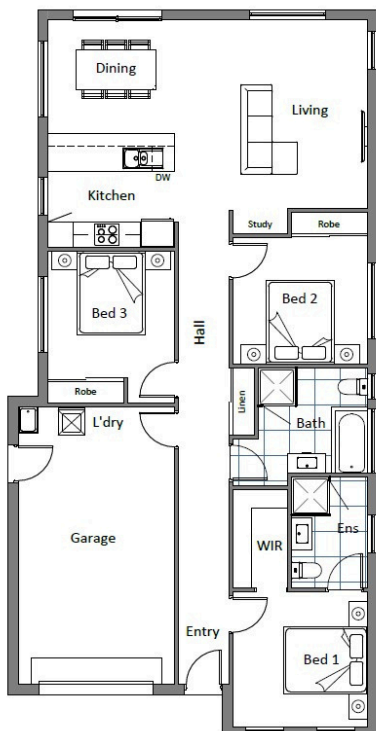


## HOUSE & LAND PACKAGE

PRICED FROM  
**\$685,882**

4 Chips Way, Brighton

MYHOME PACKAGE  
AVAILABLE



**DWELLING  
SIZE:**  
Approx  
139.72m<sup>2</sup>

**BLOCK  
SIZE:**  
Approx  
497m<sup>2</sup>



**Sally Charleston**

(03) 6231 8181

209 Elizabeth Street, Hobart

[www.cunichomes.com.au](http://www.cunichomes.com.au)

Pricing based on "M" class soil, BAL-LOW and maximum fall of 500mm over the block. Pricing includes allowance for driveway, service connections and all documentation and council approvals. Image depicts style only.