

HUNTINGFIELD LAND RELEASE CUNIC HOUSE & LAND PACKAGE



Lot 131 Noblewood Rise
Huntingfield

\$800,000



4



2



1+1

LAND SIZE:
Approx
400m²

DWELLING SIZE:
Approx
165.73m²

CUNIC homes

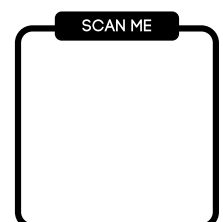
Built for you.

Cunic Homes

(03) 6231 8181 

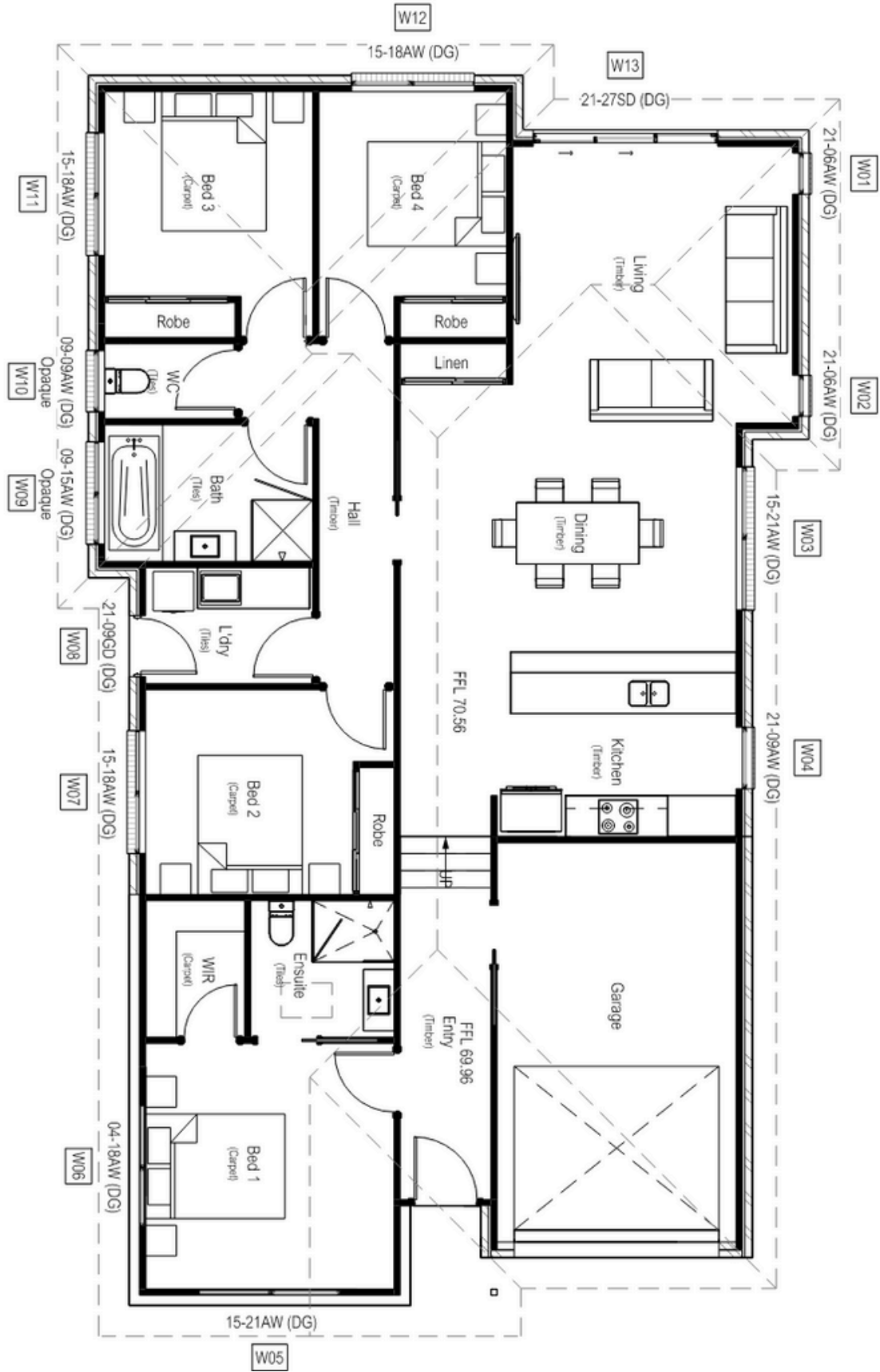
209 Elizabeth Street, Hobart 

www.cunichomes.com.au 



Pricing based on "M" class soil, subdivision contours only and BAL-Low. Pricing includes allowance for driveway, service connections and all documentation and council approvals. Image depicts style only.

FLOOR PLAN





CUNIC
homes
Built for you.

About the house

Situated within the highly anticipated Huntingfield Estate in Huntingfield, this House and Land package by Cunic Homes is perfect for families and investors.

This modern split-level home features 4-bedrooms, 2-bathrooms a single car garage, and generous open plan living.

Featuring Hamptons style facade, split-level design with high ceilings to the master bedroom included in the pricing, this new home will be the highlight of the street.

This soon to be constructed home features top brands from throughout Tasmania and Australia, with items specified and selected by Cunic's Interior Designer.

*"modern fixtures and finishes
you'll fall in love with"*

About the area

Surrounded by schools, day care facilities, shopping centers and an easy 15 minute commute to the CBD, the new Huntingfield Estate is the perfect place for your new home.

