

# HUNTINGFIELD LAND RELEASE

## CUNIC HOUSE & LAND PACKAGE



Lot 130 Noblewood Rise  
Huntingfield

**\$730,000**



**3**



**1**



**2 spaces**

**LAND SIZE:**  
Approx  
411m<sup>2</sup>

**DWELLING SIZE:**  
Approx  
111.70m<sup>2</sup>

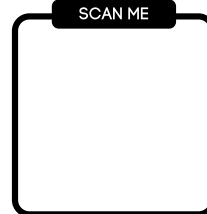
# CUNIC homes

*Built for you.*

Cunic Homes  
(03) 6231 8181  
209 Elizabeth Street, Hobart  
[www.cunichomes.com.au](http://www.cunichomes.com.au)

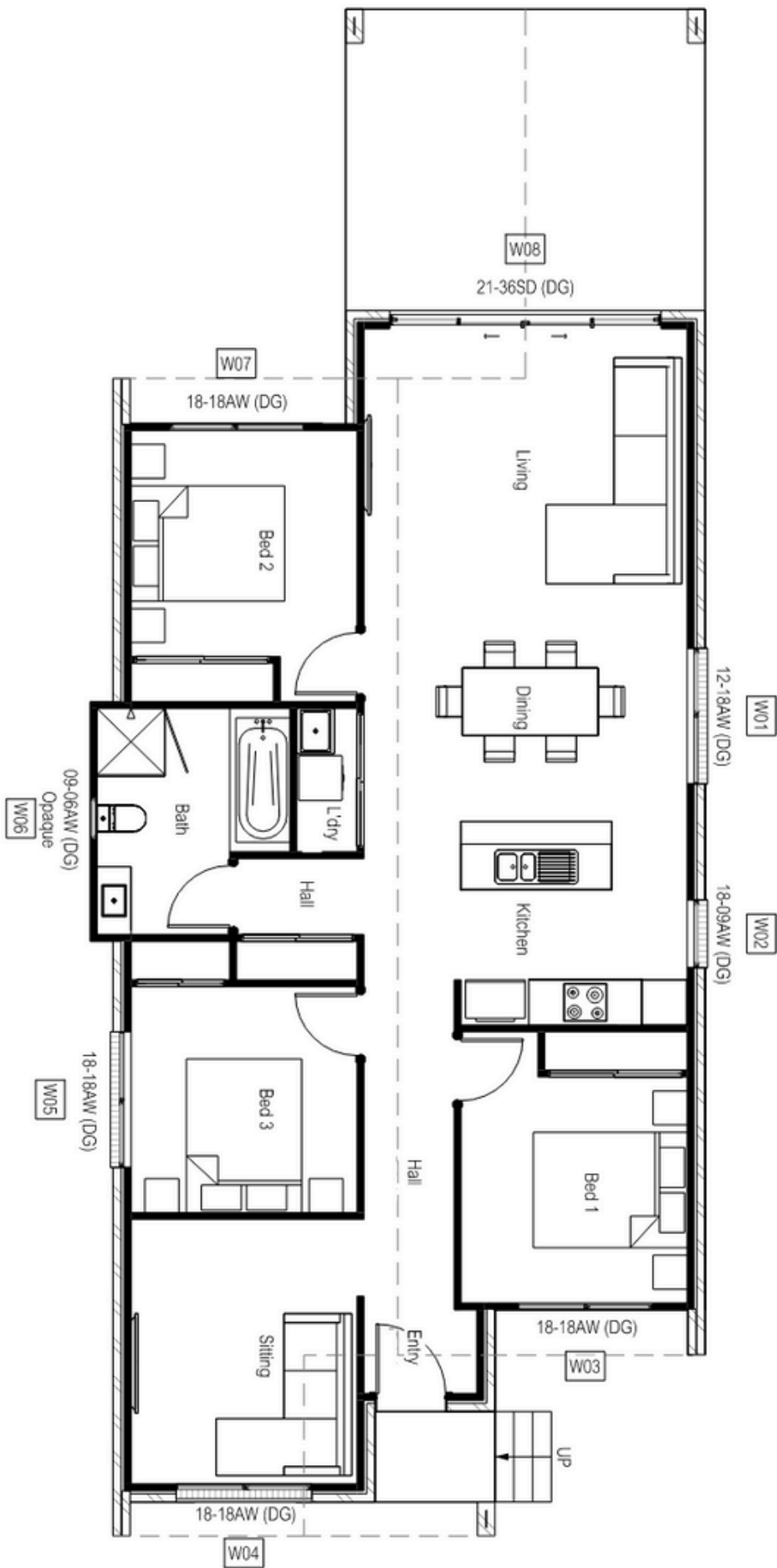


SCAN ME



Pricing based on "M" class soil, subdivision contours only and BAL-Low. Pricing includes allowance for driveway, service connections and all documentation and council approvals. Image depicts style only.

# FLOOR PLAN





**CUNIC**  
homes  
*Built for you.*

## About the house

Situated within the highly anticipated Huntingfield Estate in Huntingfield, this House and Land package by Cunic Homes is perfect for families and investors.

This modern single-story home features 3-bedroom, 1-bathroom, generous open plan living with additional family room (or 4<sup>th</sup> bedroom) and ample parking for two cars.

Featuring pitched upgraded architectural facade and design features, a large covered alfresco, quality joinery to the kitchen, laundry and bedrooms this new home will be the highlight of the street.

This soon to be constructed home features top brands from throughout Tasmania and Australia, with items specified and selected by Cunic's Interior Designer.

*"modern fixtures and finishes  
you'll fall in love with"*

## About the area

Surrounded by schools, day care facilities, shopping centers and an easy 15 minute commute to the CBD, the new Huntingfield Estate is the perfect place for your new home.

