

# CUNIC homes



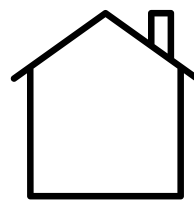
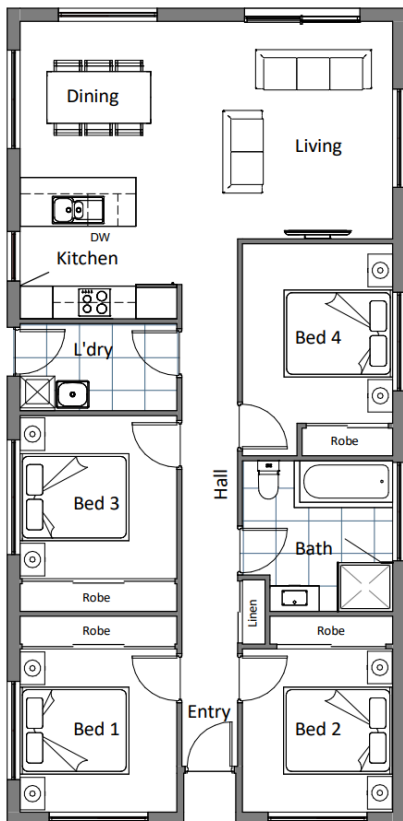
## HOUSE & LAND PACKAGE

PRICED FROM  
**\$547,500**

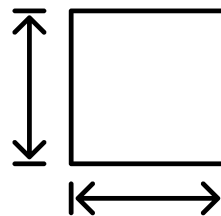
Lot 2, 6 East Bagdad Road, Bagdad

MYHOME PACKAGE  
AVAILABLE

We are custom builders and if this design does not suit, we can assist in designing a home to suit you.



**DWELLING  
SIZE:**  
Approx  
108.74m<sup>2</sup>



**BLOCK  
SIZE:**  
Approx  
642m<sup>2</sup>



**Sally Charleston**

(03) 6231 8181

209 Elizabeth Street, Hobart

[www.cunichomes.com.au](http://www.cunichomes.com.au)

# CUNIC homes



## Lot 2, 6 East Bagdad Road, Bagdad

### The area

Centrally located within the historic township of Bagdad. This newly developed and rapidly growing estate offers a peaceful, friendly settling suitable for young families and retirees.

Enjoy rural living with spacious level land to build your new home. Approx 40 mins to Hobart, 30 mins to Glenorchy and a short 15 mins to the bustling town of Brighton.

MyHome scheme packages available and titled land.

### The house

This entry level home features 4-bedrooms, 1-bathroom and open plan living. Just a phone call away and this new house & land package by Cunic Homes could be yours to enjoy.

### The package

Based on Cunic's Classic inclusions, the home features products from top brands and suppliers from Tasmania and Australia. With the option to select colours and finishes to truly make this package your own, you will be guided through your selections process at Cunic's in-house selection studio by Cunic's qualified Interior Designer.

Pricing is based on "M" class soil, BAL-LOW rating, with a maximum site fall of 700mm. Individual legal contracts apply for both the purchase of the land and construction of the home, and price is not inclusive of stamp duty or other legal or statutory fees relating to the purchase of the land.