

# CUNIChomes

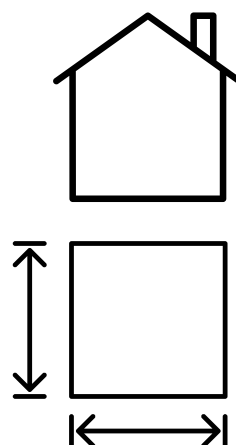
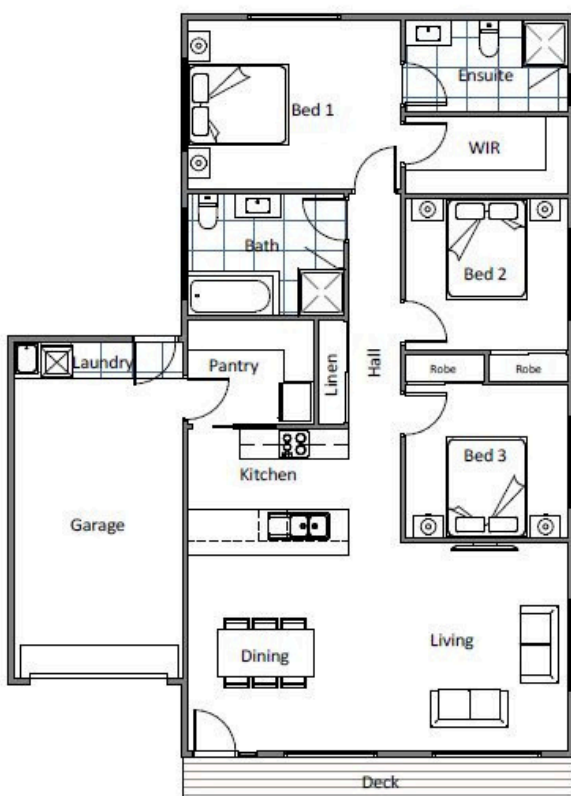


## HOUSE & LAND PACKAGE

PRICED FROM  
**\$634,200**

**Lot 52 Norfolk Park, New Norfolk**

MYHOME PACKAGE  
AVAILABLE



**DWELLING  
SIZE:**  
Approx  
135.86m<sup>2</sup>

**BLOCK  
SIZE:**  
Approx  
607m<sup>2</sup>



SCAN ME



**Sally Charleston**

(03) 6231 8181

209 Elizabeth Street, Hobart

[www.cunichomes.com.au](http://www.cunichomes.com.au)



# CUNIC homes



## Lot 52 Norfolk Park, New Norfolk

### The area

Situated within the brand new Norfolk Park off Dixon Street in New Norfolk, this house & land package by Cunic Homes is perfect for families, first home buyers, and investors. Titles due in end of 2024.

This new contemporary family home sits in an elevated position overlooking the picturesque town of New Norfolk, just a 35-minute drive to Hobart CBD. Nearby you will find Tynwald Park walking tracks, services, supermarket, doctors, cafes, and historic buildings all within a short stroll or 2-minute drive. Myhome Scheme package available.

### The house

Comprising 3-bedrooms, 2-bathrooms, 1-garage and open plan living, this new house & land package by Cunic Homes is ready for you to call home.

### The package

Based on Cunic's Classic inclusions, the home features products from top brands and suppliers from Tasmania and Australia. With the option to select colours and finishes to truly make this package your own, you will be guided through your selections process at Cunic's in-house selection studio by Cunic's qualified Interior Designer.

Pricing is based on "P" class soil, BAL-19 rating, with a maximum site fall of 700mm. Individual legal contracts apply for both the purchase of the land and construction of the home, and price is not inclusive of stamp duty or other legal or statutory fees relating to the purchase of the land.