

# CUNIC homes

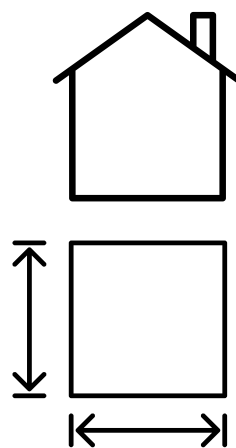
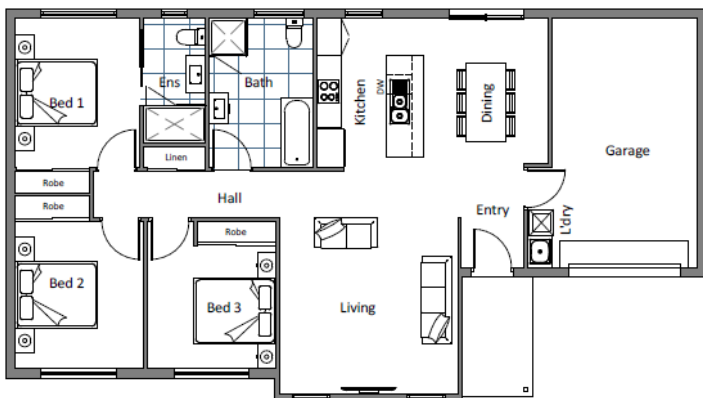


## HOUSE & LAND PACKAGE

PRICED FROM  
**\$678,000**

Lot 5 – 3A Aquila Street, Glenorchy

MYHOME PACKAGE  
AVAILABLE



**DWELLING  
SIZE:**  
Approx  
136.61m<sup>2</sup>

**BLOCK  
SIZE:**  
Approx  
450m<sup>2</sup>



**Sally Charleston**

(03) 6231 8181

209 Elizabeth Street, Hobart

[www.cunichomes.com.au](http://www.cunichomes.com.au)

# CUNIC homes



## Lot 5 – 3A Aquila Street, Glenorchy

### The area

Located in Glenorchy, this house & land package by Cunic Homes is perfect for families, first home buyers, and investors.

Located close to transport, services, Dominic School and Tolosa Dam, this property will provide the perfect location for family-friendly living. With titles due shortly and located in an established neighbourhood, this house and land package won't last long.

Looking for MyHome eligible packages. Ask us how today.

### The house

Comprising 3-bedrooms, 2-bathrooms, 1-garage and open plan living, this new house & land package by Cunic Homes is ready for you to call home. A 3-bedroom, 2-bathroom option available from \$630,000.

### The package

Based on Cunic's Classic inclusions, the home features products from top brands and suppliers from Tasmania and Australia. With the option to select colours and finishes to truly make this package your own, you will be guided through your selections process at Cunic's in-house selection studio by Cunic's qualified Interior Designer.

Pricing is based on "M" class soil, BAL-LOW rating, with a maximum site fall of 1700mm. Individual legal contracts apply for both the purchase of the land and construction of the home, and price is not inclusive of stamp duty or other legal or statutory fees relating to the purchase of the land.