

# CUNIC homes

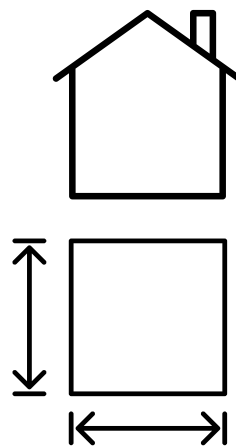
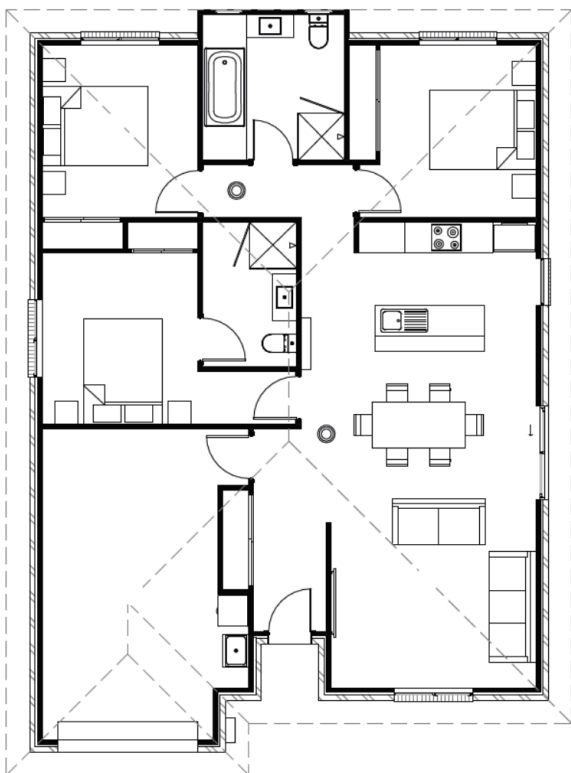


## HOUSE & LAND PACKAGE

PRICED FROM  
**\$665,000**

11 Tandara Court (Lot 6), Old Beach

MYHOME PACKAGE  
AVAILABLE



**DWELLING  
SIZE:**  
Approx  
132.69m<sup>2</sup>

**BLOCK  
SIZE:**  
Approx  
451m<sup>2</sup>



**Sally Charleston**

 (03) 6231 8181

 209 Elizabeth Street, Hobart

 [www.cunichomes.com.au](http://www.cunichomes.com.au)

# CUNIC homes



## 11 Tandara Court (Lot 6), Old Beach

### The area

Located in the calm and beauty of Old Beach, this house & land package by Cunic Homes is perfect for families, first home buyers, and investors where your dream lifestyle becomes a reality.

Old Beach is a fast growing, in-demand suburb popular with first home buyers, families, investors and retirees. Close to local schools, bus stops, parks, shops, cafes and local community services. Just 12 mins to Glenorchy and 25mins to Hobart CBD.

### The house

Comprising 3-bedrooms, 2-bathrooms, 1-garage and open plan living, this new house & land package by Cunic Homes is ready for you to call home.

### The package

Based on Cunic's Classic inclusions, the home features products from top brands and suppliers from Tasmania and Australia. With the option to select colours and finishes to truly make this package your own, you will be guided through your selections process at Cunic's in-house selection studio by Cunic's qualified Interior Designer.

Pricing is based on "M" class soil, BAL-12.5 rating with a maximum site fall of 500mm. Individual legal contracts apply for both the purchase of the land and construction of the home, and price is not inclusive of stamp duty or other legal or statutory fees relating to the purchase of the land.