

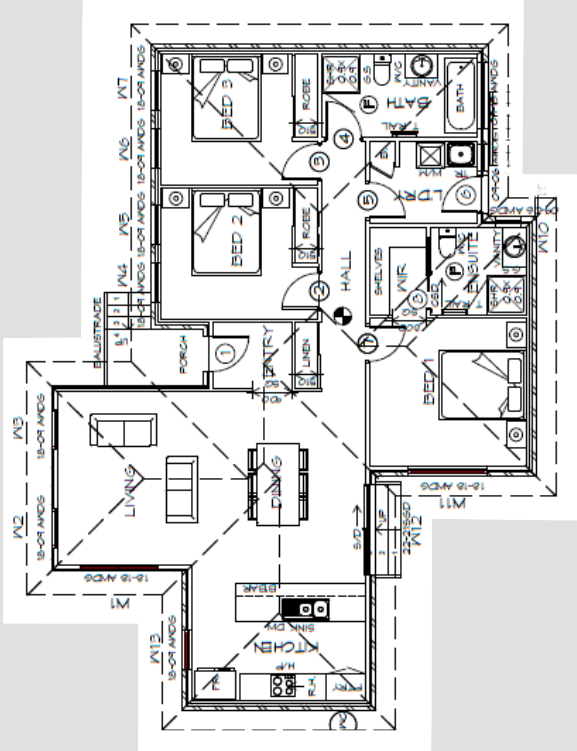


FOR SALE

OFFERS OVER
\$725,000



LOT 110 GREENVILLE ESTATE, ROKEBY
DWELLING SIZE: 120.86m² | BLOCK SIZE SIZE: 604m²



Porch	3.43m ²	Bedroom 1	3.4m x 3.6m
Living/Dining	4m x 7.11m	Bedroom 2	3.0m x 3.0m
		Bedroom 3	3.0m x 3.0m

Stunning new home, on a flat block of land, located in the highly sought-after Greenville Estate. The versatile floorplan has 3 great sized bedrooms and 2 bathrooms, being the perfect first home for a growing family.

With a large living area and beautiful kitchen that boasts quality appliances, this layout ensures ample space for entertaining friends and family. The layout leaves perfect space for a deck or alfresco for indoor/outdoor living.

Showcasing a list of quality finishes throughout and the unbeatable location within minutes to shops, schools, and transport.

Smartstart Finance Available.

Pricing starts from \$725,000 on the pictured design. Individual legal contracts apply for both the purchase of the land and the construction on the home. Price is not inclusive of stamp duty or any other fees relating to the land purchase. Packages prices are based on a maximum site fall or 300mm over the building allotment and M class soil classification, and a BAL low rating. Package prices are based off Cunic Homes Contemporary living inclusions with the option of upgrades. All plans are copy right and no part may be reciprocated or copied without prior consent from Cunic Homes.

FOR ALL ENQUIRIES PLEASE CONTACT THE FRIENDLY TEAM AT CUNIC HOMES

209 Elizabeth Street, Hobart Tasmania

Phone: 6231 8181 | Email: info@cunic.com.au | www.cunichomes.com.au