



FOR SALE

OFFERS OVER
\$510,000



**UNIT 4, OLIVE GROVE ESTATE
RISDON VALE**

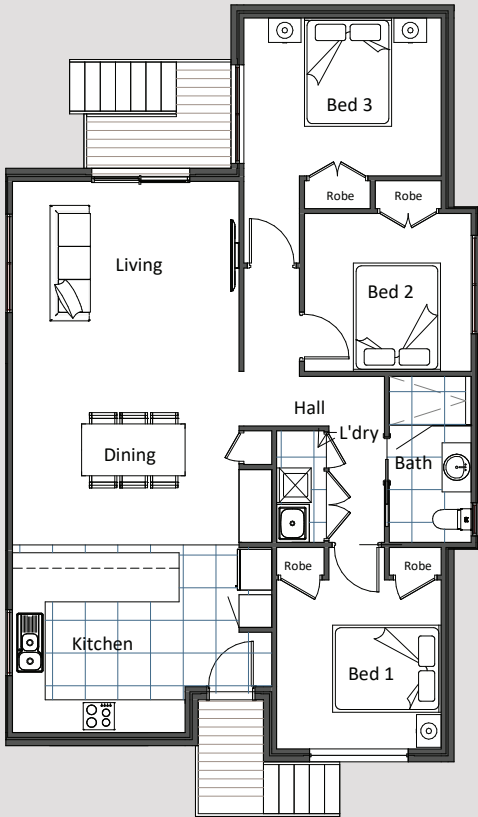
TOTAL AREA: 102.35m²

Living/Dining	4250 X 6600	Bedroom 1	3020 x 3700
Kitchen	4760 X 3300	Bedroom 2	3060 X 2900
		Bedroom 3	3620 X 2900

An opportunity to enter the market, downsize or purchase an investment property. Situated in a new homes area we have 5 brand new units available. All units feature open plan living and are perfectly positioned ensuring the rooms are flooded with natural light. Featuring quality appliances and finishes you can sit back and enjoy the relaxed, low maintenance lifestyle of modern living. We have both 3 bedroom and 2 bedroom units on offer with built in robes to ensure ample storage throughout. There is a generous amount of outdoor space and parking for 2 vehicles. Conveniently located with shops, cafes and schools just minutes from your doorstep and Hobart City only a 15 minute drive, these units will not be on the market for long! Pre-site works are well on the way. Available to purchase as a single payment on completion contract.

SMARTSTART AVAILABLE – Forget about repayments and enjoy the process of building your home.

*Pricing starts from \$510,000 on the pictured design. Price is not inclusive of stamp duty or any other fees relating to the land purchase. Packages prices are based on a maximum site fall or 300mm over the building allotment and a stable soil classification, and a BAL low rating. Package prices are based off Cunic Homes Smartstart living inclusions with the option of upgrades. All plans are copy right and no part may be reciprocated or copied without prior consent from Cunic Homes.



FOR ALL ENQUIRIES PLEASE CONTACT THE FRIENDLY TEAM AT CUNIC HOMES

209 Elizabeth Street, Hobart Tasmania

Phone: 6231 8181 | Email: info@cunic.com.au | www.cunichomes.com.au