

# WINSTON

4  2  2 



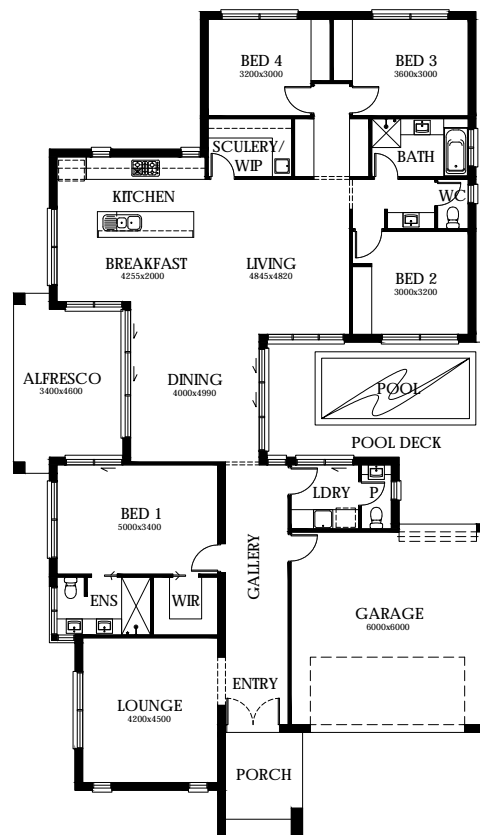
## FEATURES

- 4 Bedrooms
- Large Living / Dining Area
- Ensuite & Walk In Wardrobe
- Double Lock Up Garage
- Separate Lounge
- Swimming Pool
- Outdoor Living Area

## AREA SPECIFICATIONS

Living Area	207.85m <sup>2</sup>
Garage	40.5m <sup>2</sup>
Outdoor Living	19.61m <sup>2</sup>
TOTAL	291.19m <sup>2</sup>

Width 14.87m and Depth 25.12m



© Cunic Homes 2017. Plans and facades are artists impressions only and are not drawn to scale. Dimensions, room sizes and areas may vary.