

MILANO

4



2



2



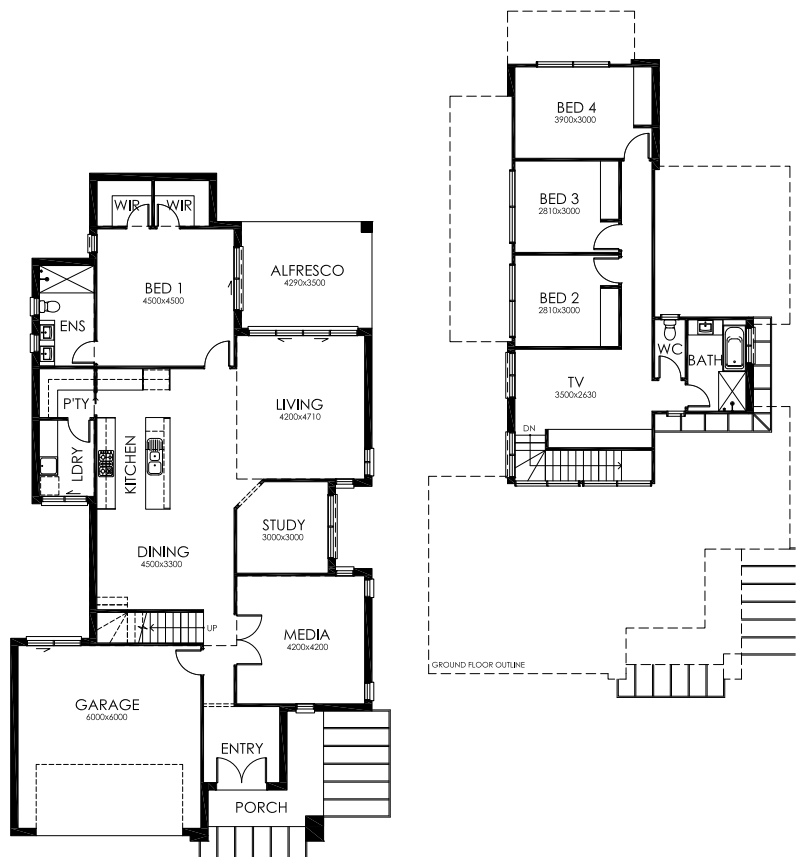
FEATURES

- 4 Bedrooms
- Large Living / Dining Area
- Ensuite & Walk In Wardrobe
- Double Lock Up Garage
- Media Room & Study
- Outdoor Living Area

AREA SPECIFICATIONS

Living Area	227.48m ²
Garage	40.75m ²
Outdoor Living	15.02m ²
TOTAL	291.07m²

Width 11.86m and Depth 21.75m



© Cunic Homes 2017. Plans and facades are artists impressions only and are not drawn to scale. Dimensions, room sizes and areas may vary.