



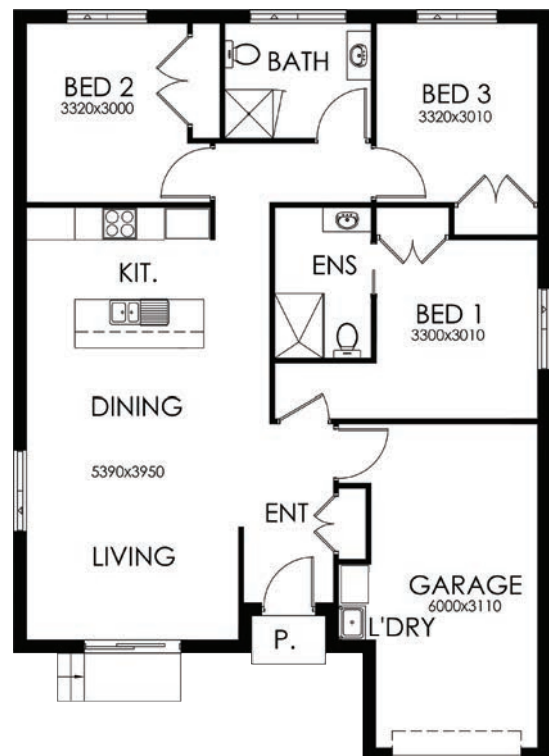
FEATURES

- 3 Bedrooms
- Large Living / Dining Area
- Large Master Bedroom
- Ensuite
- Single Lock Up Garage

AREA SPECIFICATIONS

Living Area	101.83m ²
Garage	23.01m ²
TOTAL	126.08m ²

Width 10m and Depth 13.88m



© Cunic Homes 2017. Plans and facades are artists impressions only and are not drawn to scale. Dimensions, room sizes and areas may vary.