

GEILSTON



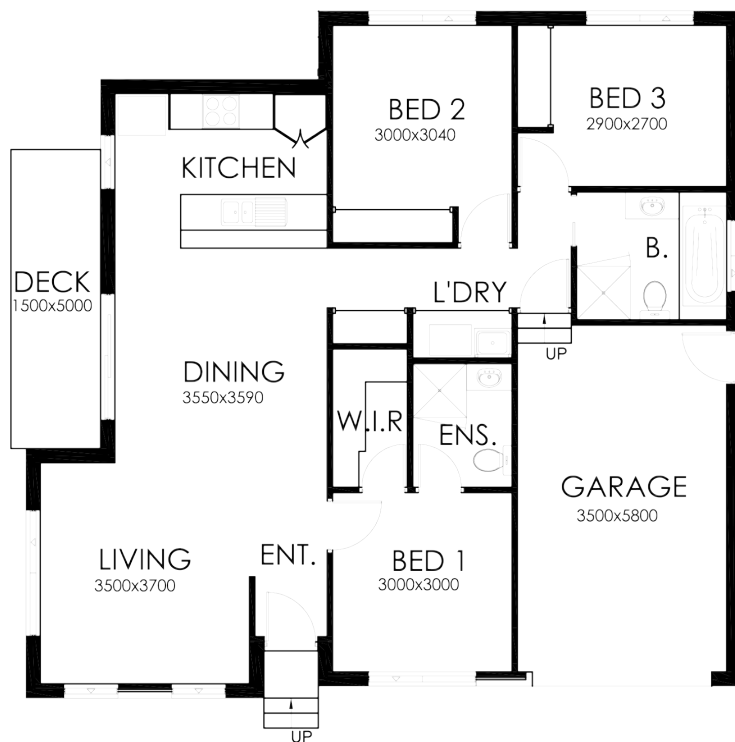
FEATURES

- 3 Bedrooms
- Large Living / Dining Area
- Ensuite & Walk In Wardrobe
- Single Lock Up Garage
- Outdoor Living Area

AREA SPECIFICATIONS

Living Area	100m ²
Garage	22.11m ²
Outdoor Living	7.5m ²
TOTAL	130.78m ²

Width 11.96m and Depth 11.3m



© Cunic Homes 2017. Plans and facades are artists impressions only and are not drawn to scale. Dimensions, room sizes and areas may vary.