

CARAWA

4



2.5



2



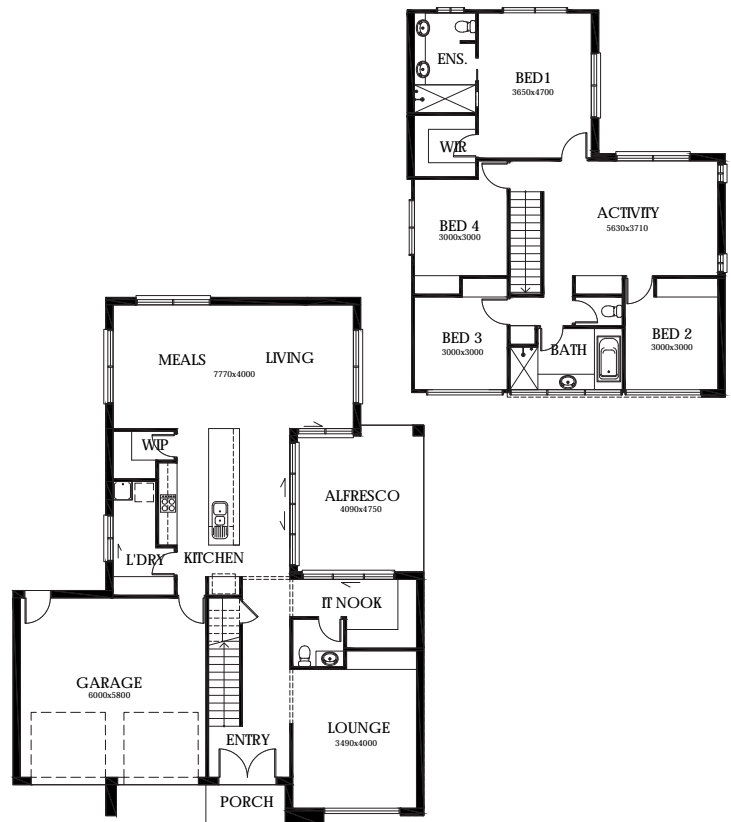
FEATURES

- 4 Bedrooms
- Large Kitchen / Living / Dining Area
- Ensuite & Walk In Wardrobe
- Separate IT Nook & Activity Area
- Double Lock Up Garage
- Outdoor Living Area

AREA SPECIFICATIONS

| | |
|----------------|----------------------|
| Living Area | 226.23m ² |
| Garage | 39.63m ² |
| Outdoor Living | 18.71m ² |
| TOTAL | 287.96m ² |

Width 13.29m and Depth 17.08m



© Cunic Homes 2017. Plans and facades are artists impressions only and are not drawn to scale. Dimensions, room sizes and areas may vary.